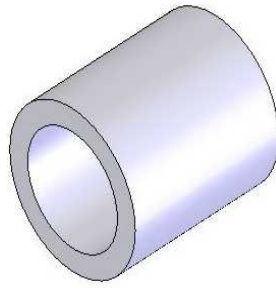


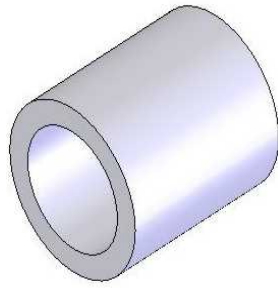
Round Tube

Section no	Weight (mm)	Sizes (mm)		Sizes (Inches)		Max Temper	
		Ext Dia	Thickness	Ext Dia	Thickness	6063	6005
11608	0.14	9.15	2.45			T6	T6
11609	0.11	9.53	1.63	7/8	16swg	T6	T6
11232	0.322	15.9	2.55	5/8		T6	T6
11352	0.184	16	1.5			T6	T6
11432	0.172	18	1.2			T6	T6
11243	0.154	19	1			T6	X
11299	0.222	19	1.5			T6	T6
11107	0.182	19.05	1.2	3/4	18swg	T6	T6
11108	0.244	19.05	1.65	3/4	16swg	T6	T6
11610	0.294	19.05	2.03	3/4	14swg	T6	T6
11109	0.437	19.05	3.25	3/4	10swg	T6	T6
14190	0.675	19.05	6.15	3/4		T6	T6
11348	0.187	23	1			T6	T6
11368	0.243	25	1.2		18swg	T6	T6
11111	0.3	25	1.5			T6	T6
11225	0.641	25	3.5			T6	T6
11226	0.851	25	5			T6	T6
11362	0.247	25.4	1.2		18swg	T6	T6
11112	0.334	25.4	1.65	1	16swg	T6	T6
11113	0.408	25.4	2.05	1	14swg	T6	T6
11114	0.613	25.4	3.25	1	10swg	T6	T6
11500	0.843	26.5	4.5			T6	T6
11611	0.701	28.58	3.25	1 1/8	10 swg	T6	T6
20191	0.743	30.5	3.25		10 swg	T6	T6
11438	0.417	31.75	1.625	1 1/4	16 swg	T6	T6
11115	0.657	31.75	2.65	1 1/4	12swg	T6	T6
11116	0.789	31.75	3.25	1 1/4	10 swg	T6	T6
11227	0.39	32	1.5			T6	T6
11227	0.39	32	1.5			T6	T6
11117	0.849	32	3.5			T6	T6
11119	1.277	35	5			T6	T6
11240	0.466	38	1.5			T6	T6
11118	0.894	38	3			T6	T6



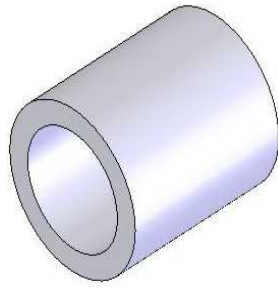
Round Tube

Section no	Weight (mm)	Sizes (mm)		Sizes (Inches)		Max Temper	
		Ext Dia	Thickness	Ext Dia	Thickness	6063	6005
11120	0.512	38.1	1.65	1 1/2	16swg	T6	T6
TU03801	0.964	38.1	3.25	1 1/2	10swg	T6	T6
11121	0.964	38.1	3.25	1 1/2	10swg	T6	T6
11270	1.715	38.1	6.35	1 1/2	1/4	T6	T6
11447	0.487	39.6	1.5			T6	T6
11447	0.487	39.6	1.5			T6	T6
11122	1.088	40	3.5			T6	T6
11123	1.49	40	5			T6	T6
11542	0.478	41.5	1.4			T6	T6
11472	0.517	42	1.5			T6	T6
11472	0.517	42	1.5			T6	T6
21002	1.575	42	5			T6	T6
11481	1.171	42.2	3.56			T6	T6
11481	1.171	42.2	3.56			T6	T6
14584	0.642	42.7	1.85			T6	T6
11359	0.859	42.85	2.5			T6	T6
11460	1.022	43	3			T6	T6
11126	1.034	43.5	3			T6	T6
11228	0.542	44	1.5			T6	T6
TU04402	0.722	44.4	2			T6	T6
11127	0.601	44.45	1.65	1 3/4	10swg	T6	T6
TU04401	1.136	44.45	3.18	1 3/4	1/8	T6	T6
11128	1.14	44.45	3.25	1 3/4	10swg	T6	T6
11492	1.141	44.5	3.25			T6	T6
11492	1.141	44.5	3.25		10swg	T6	T6
11288	1.512	45	4.37			T6	T6
11545	0.555	48	1.4			T6	T6
11511	0.594	48	1.5			T6	T6
TU04802	0.783	48	2			T6	T6
11341	1.326	48	3.5			T6	T6
TU04801	1.397	48.26	3.68			T6	T6
TU04804	1.673	48.42	4.47			T6	T6
17856	0.621	50	1.5			T6	T6



Round Tube

Section no	Weight (mm)	Sizes (mm)		Sizes (Inches)		Max Temper	
		Ext Dia	Thickness	Ext Dia	Thickness	6063	6005
11130	0.817	50	2			T6	T6
15457	1.201	50	3			T6	T6
11131	1.916	50	5			T6	T6
1465	0.831	50.8	2			T6	T6
TU05002	0.831	50.8	2	2		T6	T6
11465	0.831	50.8	2	2		T6	T6
TU05005	1.082	50.8	2.64	2		T6	T6
TU05001	1.28	50.8	3.18	2	1/8	T6	T6
11135	1.314	50.8	3.25	2	10swg	T6	T6
11136	2.404	50.8	6.35	2	1/4	T6	T6
11499	3.076	51	8.5			T5	T5
11546	0.67	54	1.5			T6	T6
11138	0.962	57.15	2.05	2 1/4	14swg	T6	T6
TU06001	0.698	60	1.4			T6	T6
11139	2.341	60	5			T6	T6
11277	4.257	60	10			T6	T6
22065	0.648	63.5	1.22	2 1/2	18swg	T6	T6
11565	0.859	63.5	1.63	2 1/2	16 swg	T6	T6
11530	0.859	63.5	1.63			T6	T6
11140	1.667	63.5	3.25	2 1/2	10swg	T6	T6
11279	0.829	66.5	1.5			T6	T6
15331	1.008	67.6	1.8			T6	T6
11142	1.816	69.85	3.2	2 3/4	1/8	T6	T6
11342	0.875	70	1.5			T6	T6
20759	0.946	70	1.63		16swg	T6	T6
21437	1.06	75	1.7			T6	T6
11612	0.779	76.2	1.22	3	18swg	T6	X
11566	1.035	76.2	1.63	3	16 swg	T6	T6
11306	1.046	76.2	1.65	3	16swg	T6	T6
11613	2.019	76.2	3.18	3	1/8	T6	T6
11145	2.018	76.2	3.25	3	10swg	T6	T6
11146	2.488	76.2	4.05	3	8swg	T6	T6
TU07601	0.958	76.5	1.5			T6	T6



Round Tube

Section no	Weight (mm)	Sizes (mm)		Sizes (Inches)		Max Temper	
		Ext Dia	Thickness	Ext Dia	Thickness	6063	6005
11305	1.003	80	1.5			T6	T6
11450	1.166	80	1.6			T6	T6
11450	1.166	80	1.6		1/16	T6	T6
20066	1.084	80	1.63		16swg	T6	T6
11147	3.193	80	5			T6	T6
22112	1.054	84	1.5			T6	T6
11149	1.819	86.35	2.55			T6	T6
11151	2.932	88.9	4.06	3 1/2	8 swg	T6	T6
11152	4.463	88.9	6.35	3 1/2	1/4	T6	T6
11153	3.618	90	5			T6	T6
21045	1.466	95	1.85			T6	T6
11300	4.043	100	5			T6	T6
11552	1.068	101.6	1.25	4		T6	T6
11407	1.278	101.6	1.5	4		T6	T6
11156	5.149	101.6	6.35	4	1/4	T6	T6
16708	1.29	102.6	1.5			T6	T6
20100	1.385	110	1.5			T6	T6
11400	1.839	110	2			T6	T6
11468	1.912	114.3	2			T6	T6
21438	1.94	116	2			T6	T6
21439	2.393	130	2.2			T6	T6